

1SS270

SILICON EPITAXIAL PLANAR DIODE

Band Swithing Diode

Features

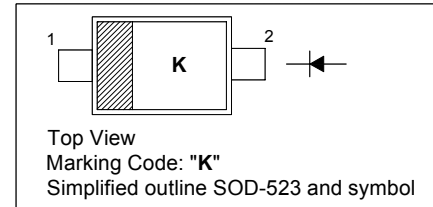
- Extremely small surface mounting type
- High reliability

Applications

- High frequency switching

PINNING

| PIN | DESCRIPTION |
|-----|-------------|
| 1 | Cathode |
| 2 | Anode |

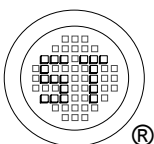


Absolute Maximum Ratings ($T_a = 25\text{ }^\circ\text{C}$)

| Parameter | Symbol | Value | Unit |
|---------------------------|-----------|---------------|------------------|
| Reverse Voltage | V_R | 35 | V |
| Forward Current | I_F | 100 | mA |
| Junction Temperature | T_J | 125 | $^\circ\text{C}$ |
| Storage Temperature Range | T_{stg} | - 55 to + 125 | $^\circ\text{C}$ |

Characteristics at $T_a = 25\text{ }^\circ\text{C}$

| Parameter | Symbol | Max. | Unit |
|---|--------|------|----------|
| Forward Voltage at $I_F = 10\text{ mA}$ | V_F | 1 | V |
| Reverse Current at $V_R = 25\text{ V}$ | I_R | 10 | nA |
| Capacitance Between Terminals at $V_R = 6\text{ V}$, $f = 1\text{ MHz}$ | C_T | 1.2 | pF |
| Forward Operating Resistance at $I_F = 2\text{ mA}$, $f = 100\text{ MHz}$ | R_F | 0.7 | Ω |



SEMTECH ELECTRONICS LTD.

(Subsidiary of Sino-Tech International Holdings Limited, a company
listed on the Hong Kong Stock Exchange, Stock Code: 724)



Dated : 23/11/2006

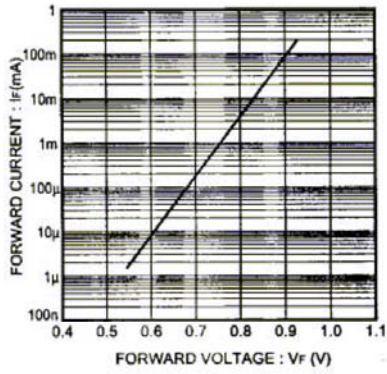


Fig. 1 Forward characteristics

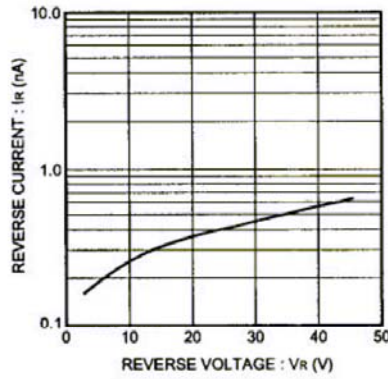


Fig. 2 Reverse characteristics

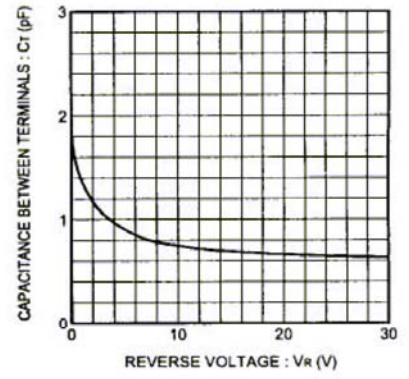


Fig. 3 Capacitance between terminals characteristics

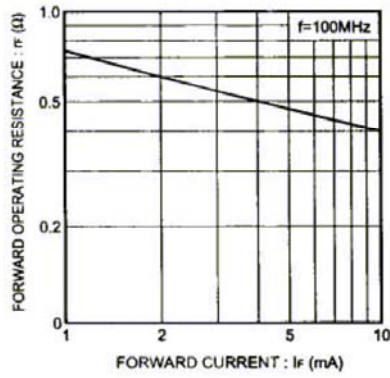
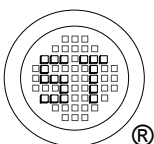


Fig. 4 Forward operating resistance characteristics



SEMTECH ELECTRONICS LTD.
 (Subsidiary of Sino-Tech International Holdings Limited, a company listed on the Hong Kong Stock Exchange, Stock Code: 724)



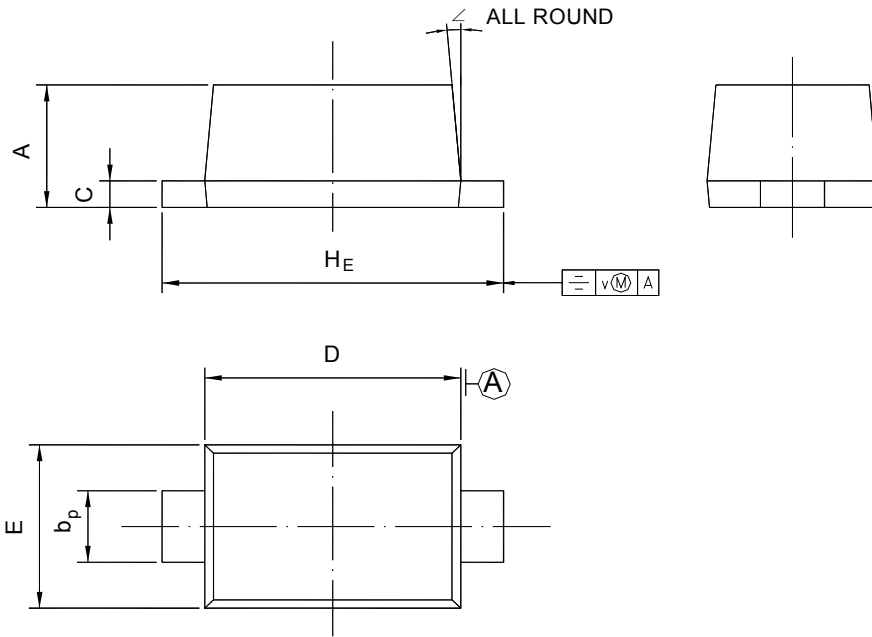
ISO/TS 16949 : 2002 Certificate No. 05103
 ISO 14001:2004 Certificate No. 7116
 ISO 9001:2000 Certificate No. 0506098

1SS270

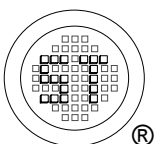
PACKAGE OUTLINE

Plastic surface mounted package; 2 leads

SOD-523



| UNIT | A | b _p | C | D | E | H _E | V | ∠ |
|------|--------------|----------------|----------------|--------------|--------------|----------------|-----|----|
| mm | 0.70 0.60 | 0.4 0.3 | 0.135 0.127 | 1.25 1.15 | 0.85 0.75 | 1.7 1.5 | 0.1 | 5° |



SEMTECH ELECTRONICS LTD.
 (Subsidiary of Sino-Tech International Holdings Limited, a company
 listed on the Hong Kong Stock Exchange, Stock Code: 724)



Dated : 23/11/2006